

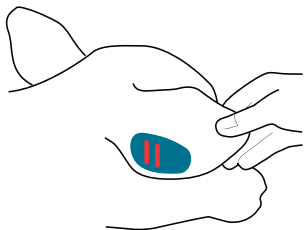


Tego Bovine Collection Kit

Handy Hints

To get the best performance from your TEGO™ Bovine Blood Collection Kit, follow these handy hints:

- **The best sample** will be collected from a clean ear with the card placed against the back of the ear, close to the edge and low down towards the head. In cold weather there will be little blood circulation to the tips of the ears, so placing the device close to the head is especially important.

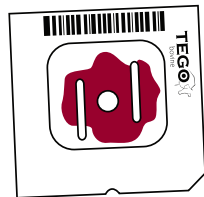


- To place the device on the ear press the handles of the ear tagger with **moderate pressure**; pressing too firmly will not increase the amount of sample and can result in the blades not retracting and blocking blood flow. If only a small amount of blood is visible on the card after 15 seconds **rotate the device** on the ear to improve saturation. In the rare case that no blood spot is visible, the TEGO™ can be pulled off the ear, reloaded into the applicator and reapplied.

- **Fully release the handles** of the ear tagger before drawing the taggers away

from the ear. Pulling the taggers away before the handles are released may result in bending of the TEGO pin. As the pin is made from stainless steel, if bending does occur the pin can easily be pushed back into alignment and re-used.

- When **approximately ½ of the card is saturated** with blood there is adequate sample for most testing. Cards saturated with blood can be stored immediately into the specialised envelope provided. Remember to identify each sample for accurate record keeping. Cards can then be stored and transported at room temperature.



- After blood collection **ensure that the TEGO card and envelope are not stored in plastic**. Storage in plastic (bags or sealed containers) will inhibit drying of the blood sample, cause sweating and result in mould overgrowth on the blood sample over time.

Visit www.itlanimalhealthcare.com to view a video illustrating how to use the TEGO™ bovine blood collection kit.

i For TEGO™ product information and support contact **ITL Animal Healthcare**
t: 0417 473 602
e: tego@itlcorporation.com

Allflex is a registered trademark and Retract-O-Matic is a trademark of Allflex USA, Inc. TEGO is a trademark of ITL Corporation, Melbourne, Australia. ©2011 ITL Corporation. All rights reserved. Patent pending.

✉ *Mail samples for BVDV testing directly to:*

BVDV Lab
Swans Veterinary Services
PO Box 1514
Esperance WA 6450

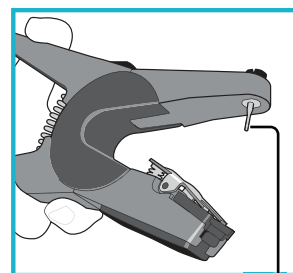
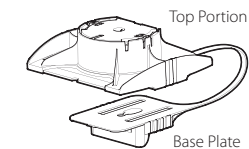
t: 08 9071 5777
f: 08 9071 5057
e: lab@swansvet.com



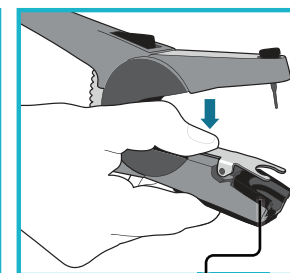
Introducing the most innovative system for bovine blood sampling

Simplifies the process, reduces the risks

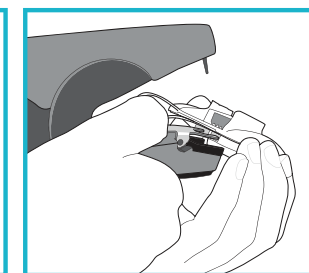
Loading Instructions



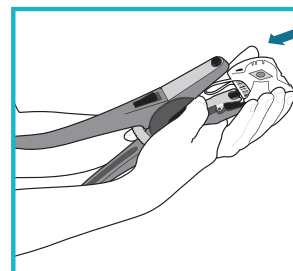
1. Replace the Allflex™ pin with the TEGO pin.



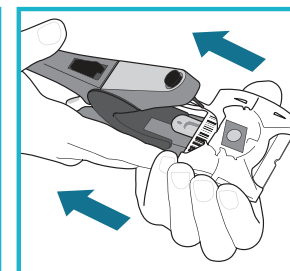
2. Ensure that the backing plate in the taggers is in place (this may have been removed for the placement of RFID tags).



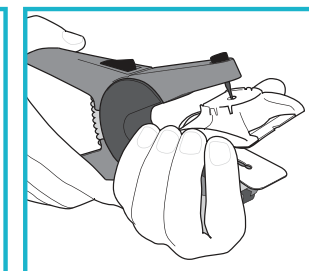
3. Depress the metal lever on the taggers to lift the metal arms.



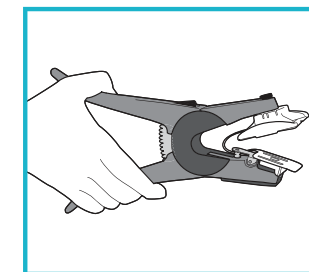
4. Hold the TEGO so that the edge with the barcode is uppermost and is facing you. Slide the TEGO so that the two arms of the Allflex tagger slot into the base of the TEGO.



5. Grip the edges of the top portion of the TEGO and pull firmly towards you, releasing the top portion from the base plate.



6. Place the TEGO so that the pin on the taggers fits into the central hole on the top portion of the TEGO.



7. The TEGO is now ready for use.

Visit www.itlanimalhealthcare.com to view a video illustrating how to use the TEGO™ bovine blood collection kit.

i For TEGO™ product information and support contact **ITL Animal Healthcare**
t: 0417 473 602
e: tego@itlcorporation.com